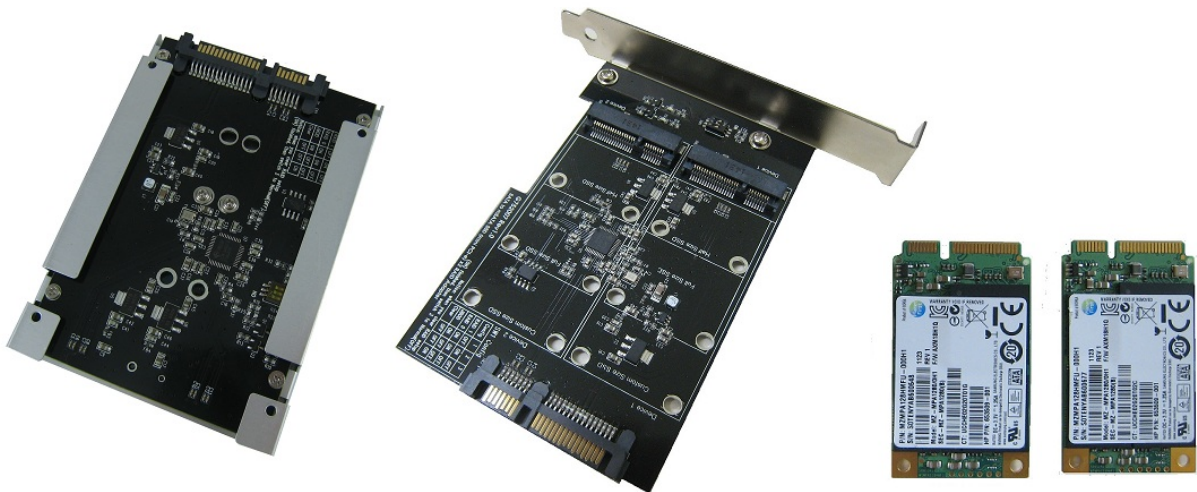


Performance test & Burn in test	
RAID card	R2021B & R2021D -- SATA II RAID Card for mSATA SSDx2
mSATA SSD	Samsung PM810 128GB/ MZMPA128HMFU-000 (SATA II -- 3Gb/s)
Test Environment	
M/B	GIGABYTE GA-X58A-UD3R
CPU	Intel i7-930, 2.8MHz/ 8G Cache/ 4.8GT
RAM	KVR1333D3N9/2G , 1333MHz,2G BYTE DIMM* 2
Power	TC START W500 , 500W ATX,12V V2.2 Power Supplier
VGA	Asus NVIDIA , Geforce 210
Operate System:	WIN 7 64bit OS

Install:

Samsung 128GB(MZMPA128HMFU-000) SSD 2 sets insert R2021B or R2021D RAID card mini PCI-e connector, and then use the copper alloys, screws and nuts fixed the mSATA SSD (Please refer to Installation Notes). RAID card connected to the X58 chipset SATA II Port (using the GIGABYTE GA-X58A-UD3R Mainboard)

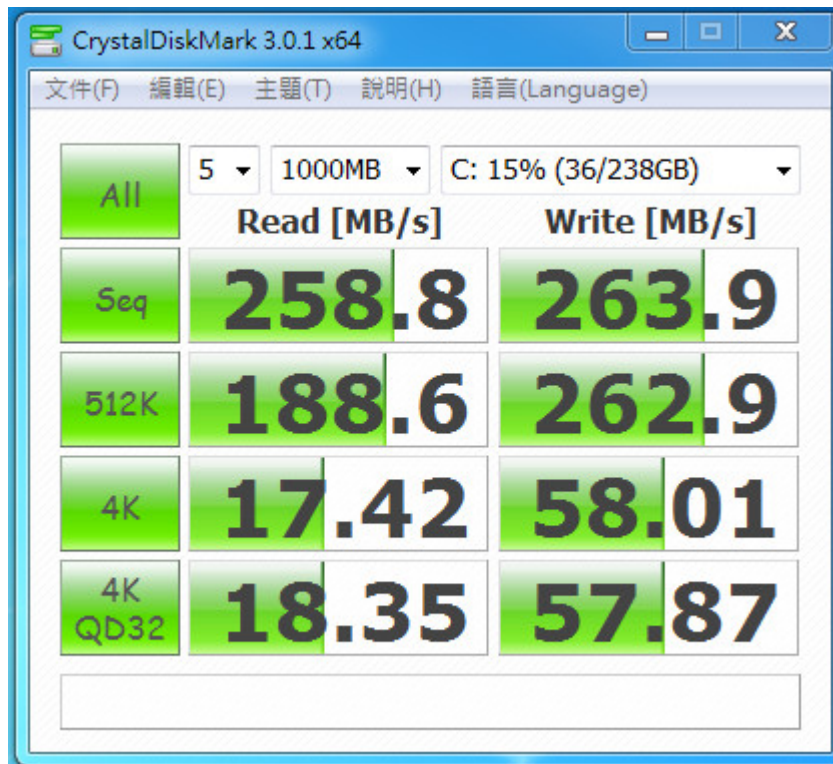
R2021B & R2021D, and Samsung 128GB(MZMPA128HMFU-000) assembly completed as below:



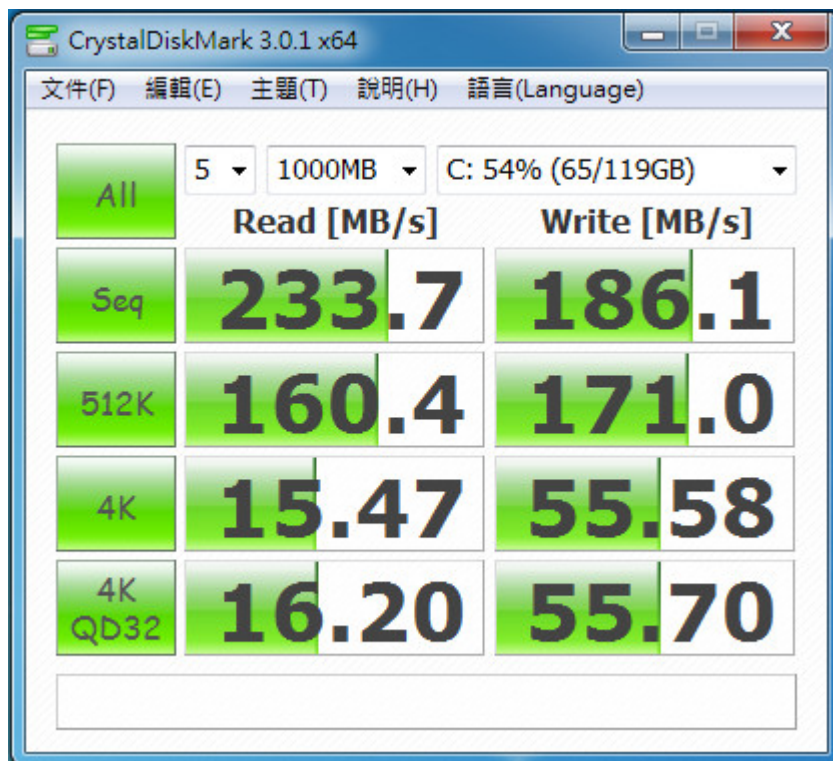
The following performance test use CrystalDiskMark 3.0.1 x64 (partition and formatted by win 7 NTFS)

※Benchmark (Sequential Read & Write / default block size= 1MB)

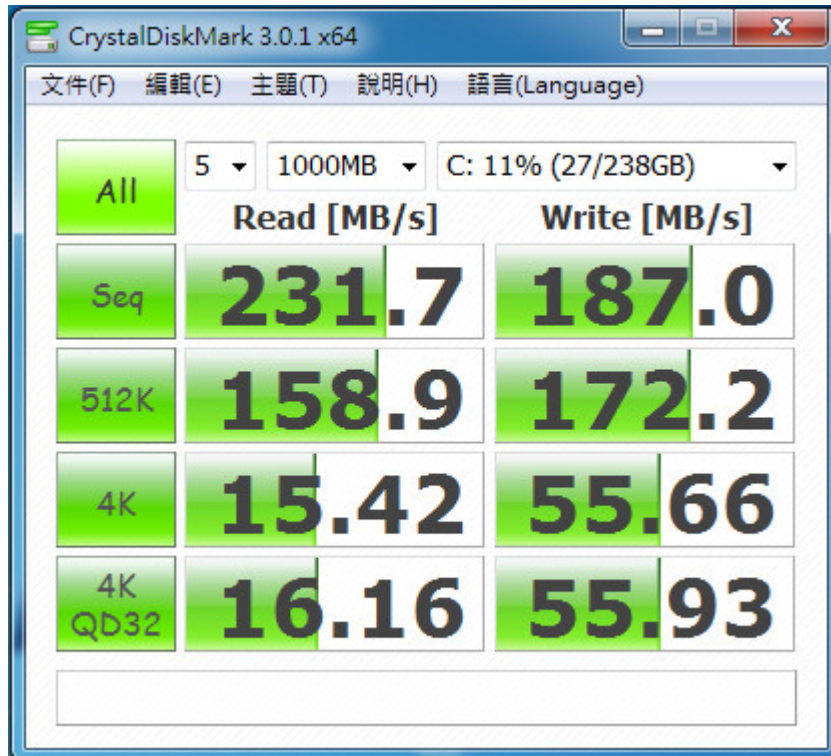
RAID 0 MODE Performance as below:



RAID 1 MODE Performance as below:



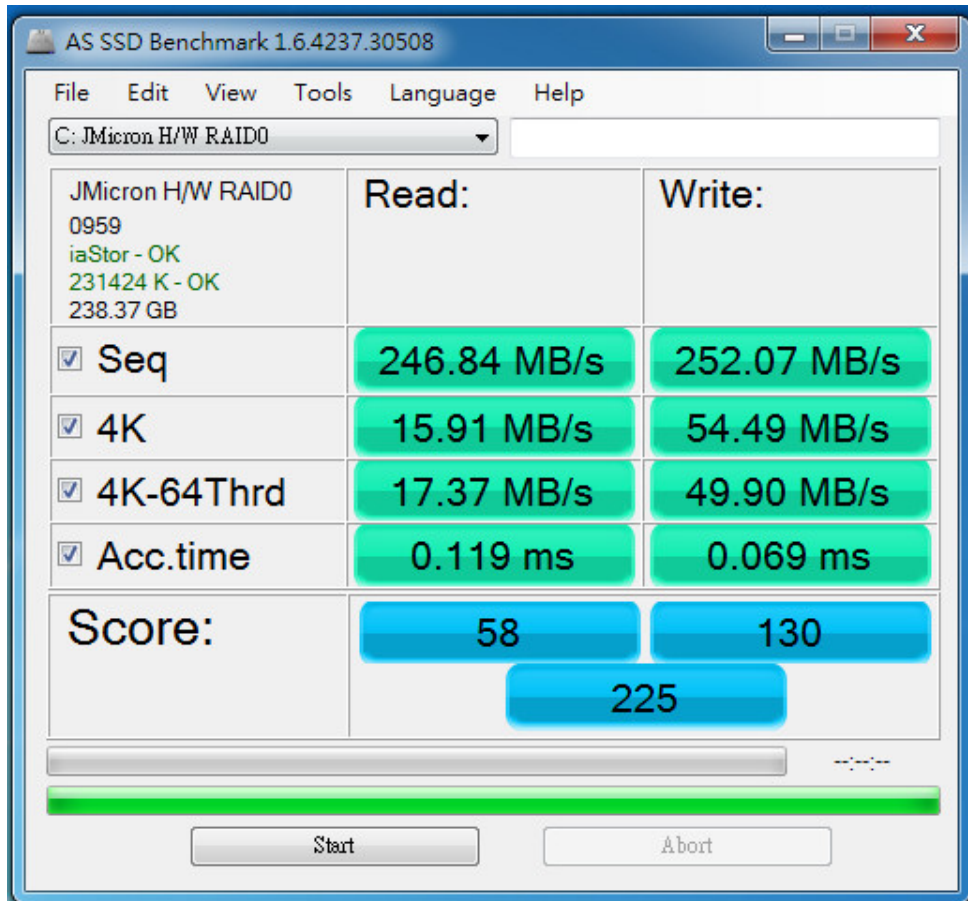
JBOD MODE Performance as below:



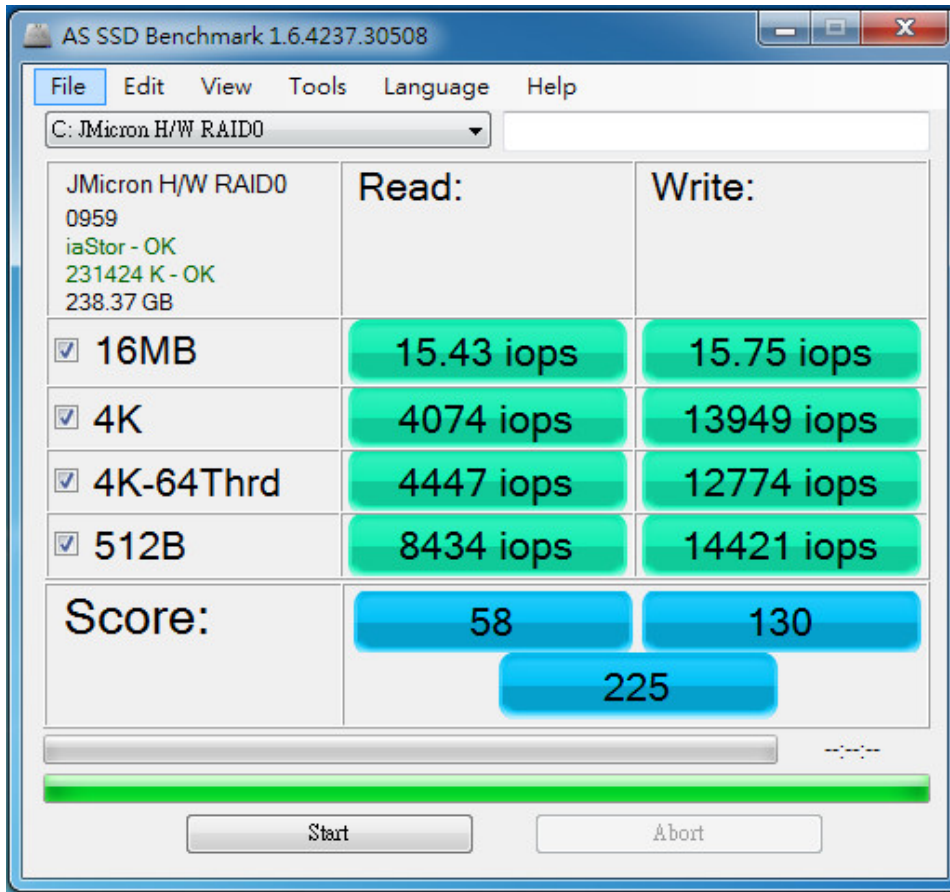
The following performance test use AS SSD Benchmark 1.6 (partition and formatted by win 7 NTFS)

※ Benchmark (Read & Write by MB/s / default block size= 16MB)

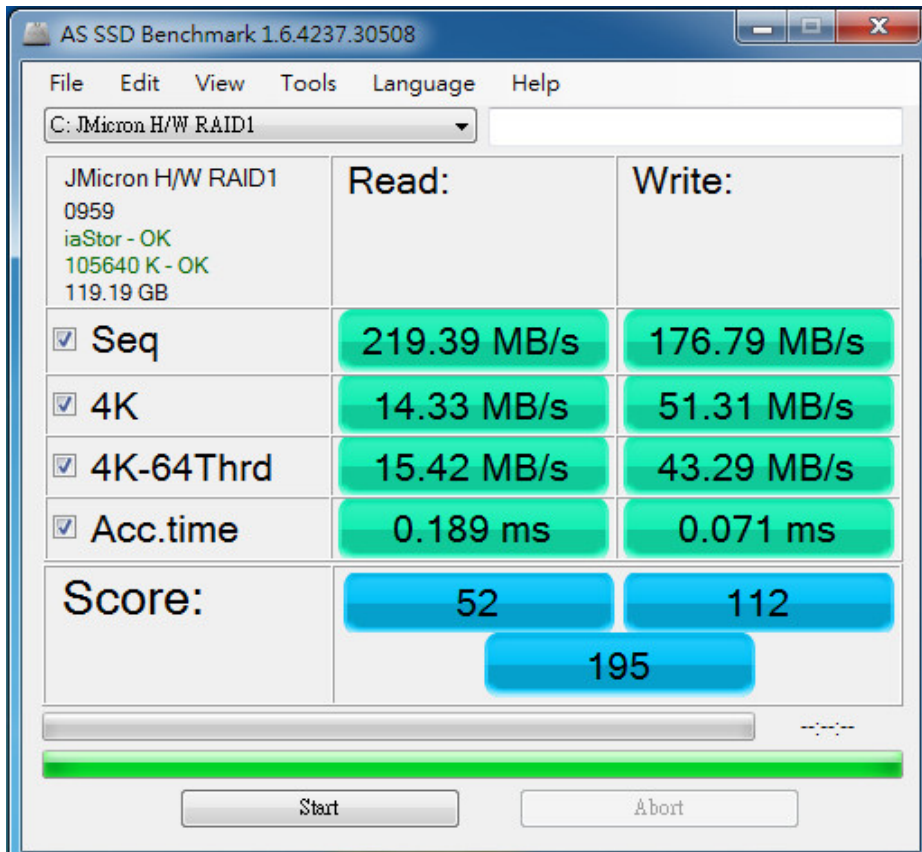
RAID 0 MODE Performance as below:



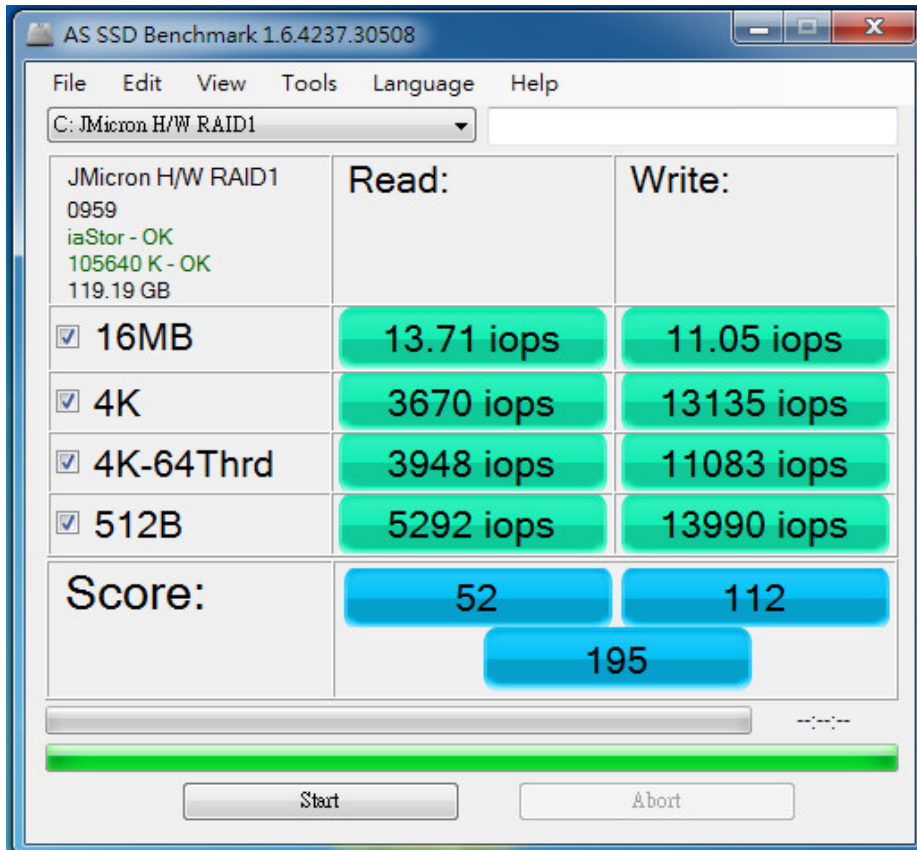
RAID 0 MODE IOPS Performance as below:



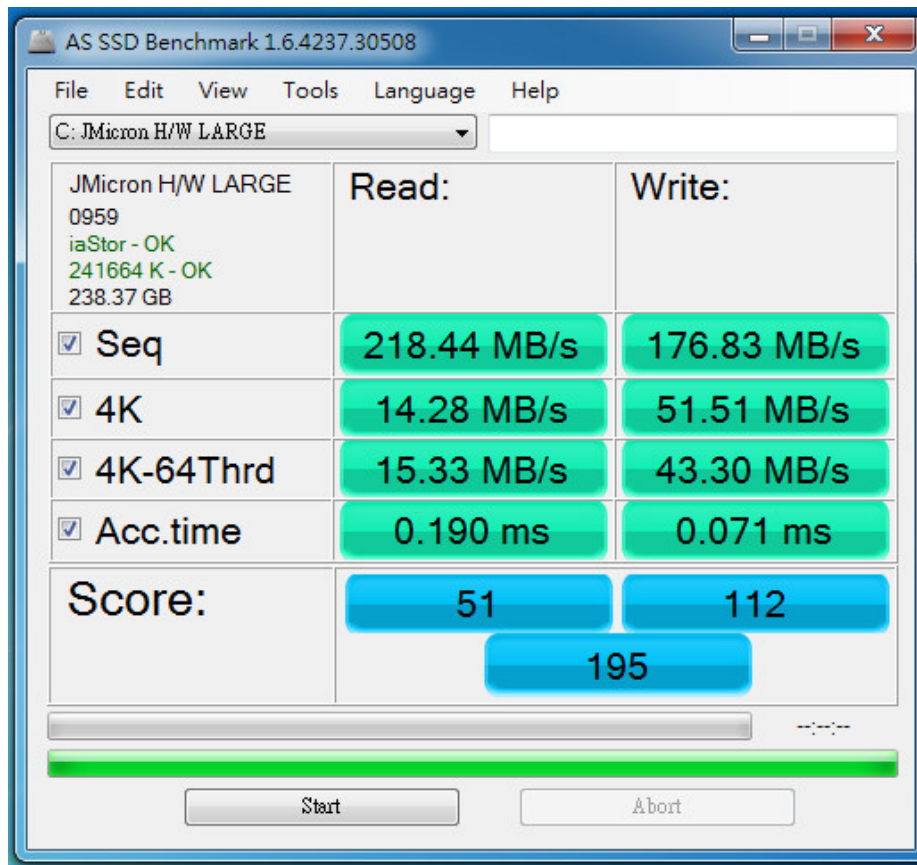
RAID 1 MODE Performance as below:



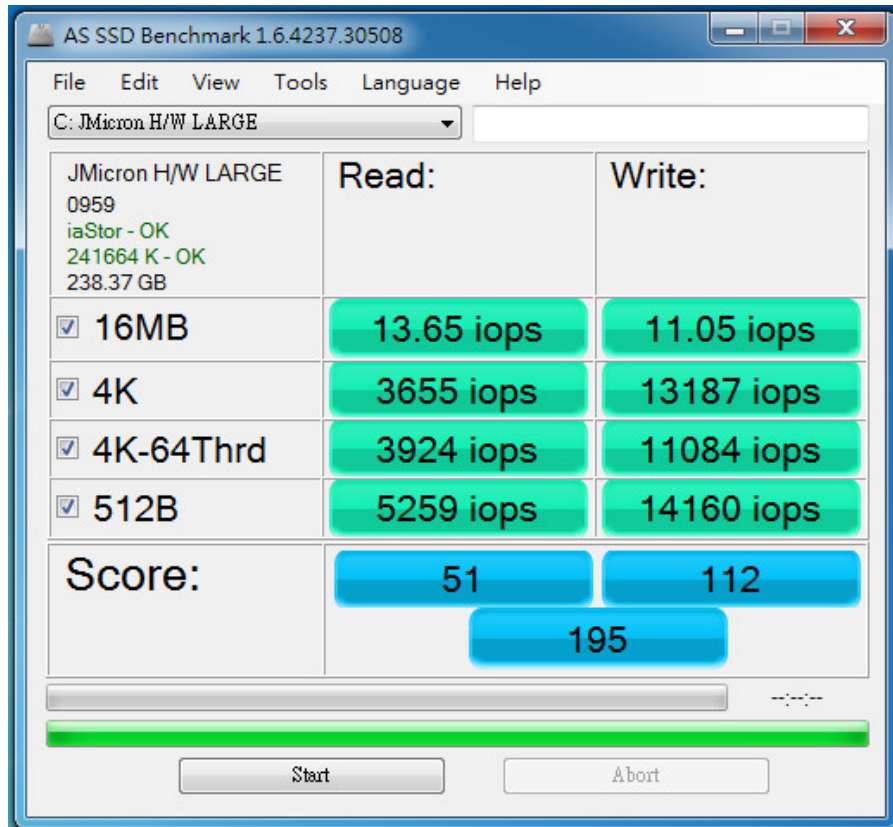
RAID 1 MODE IOPS Performance as below:



JBOD MODE Performance as below:



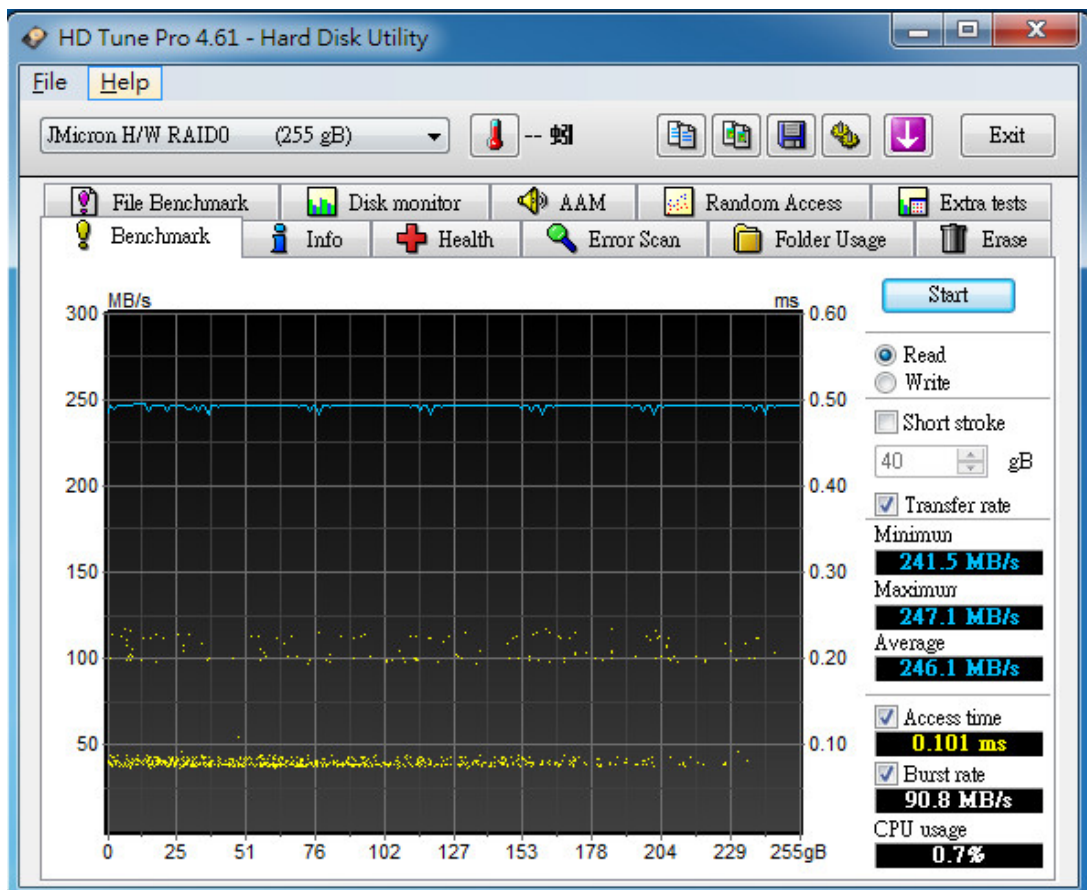
JBOD MODE IOPS Performance as below:



The following performance test use HD Tune pro 4.61 original software(partition and formatted by win 7 NTFS)

※ Benchmark (Sequential Read / default block size= 64KB)

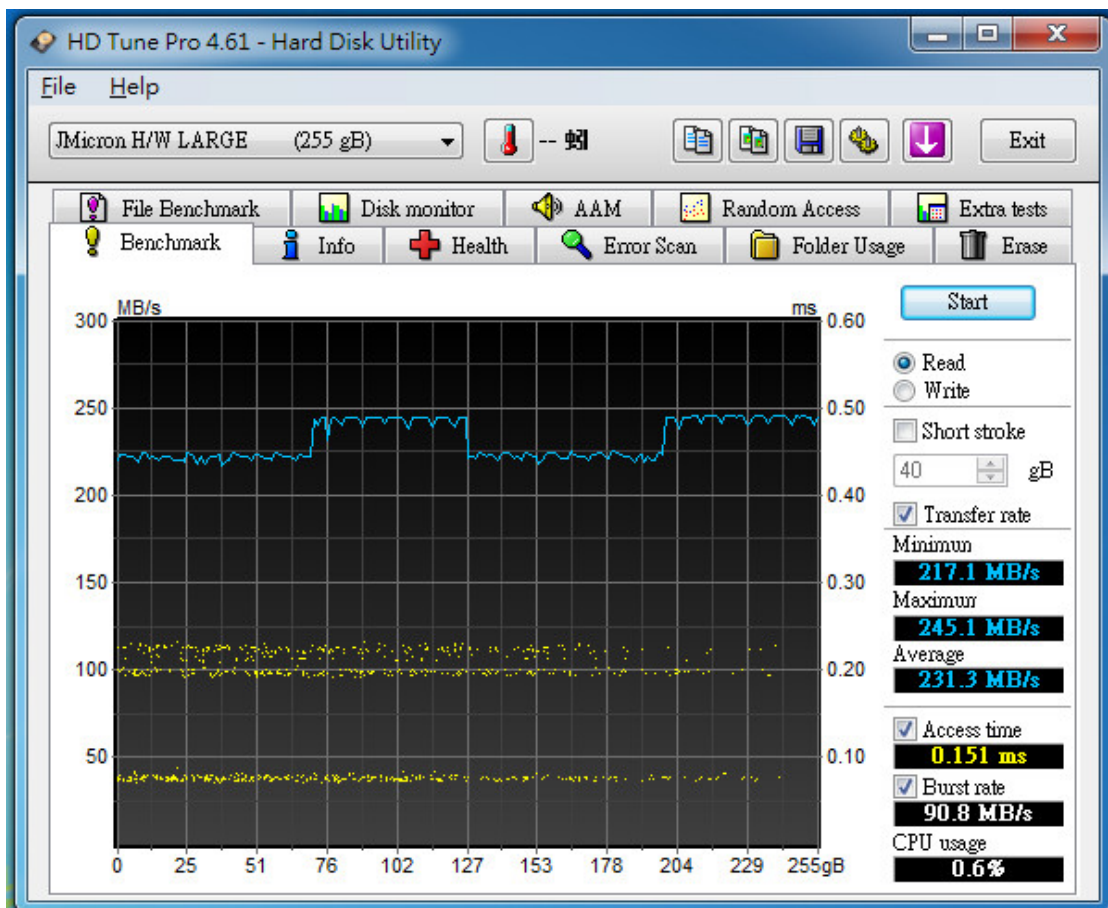
RAID 0 MODE Performance as below:



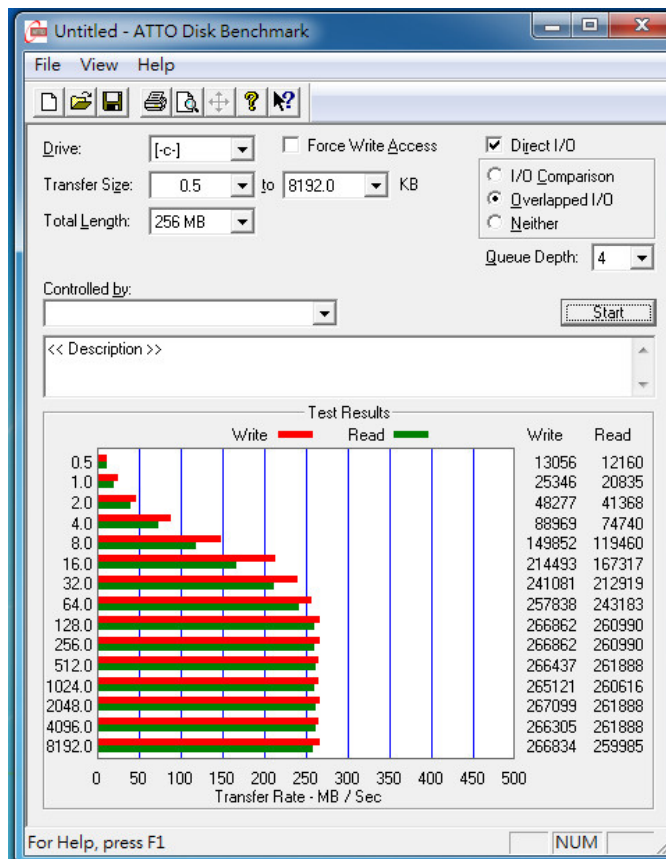
RAID 1 MODE Performance as below:



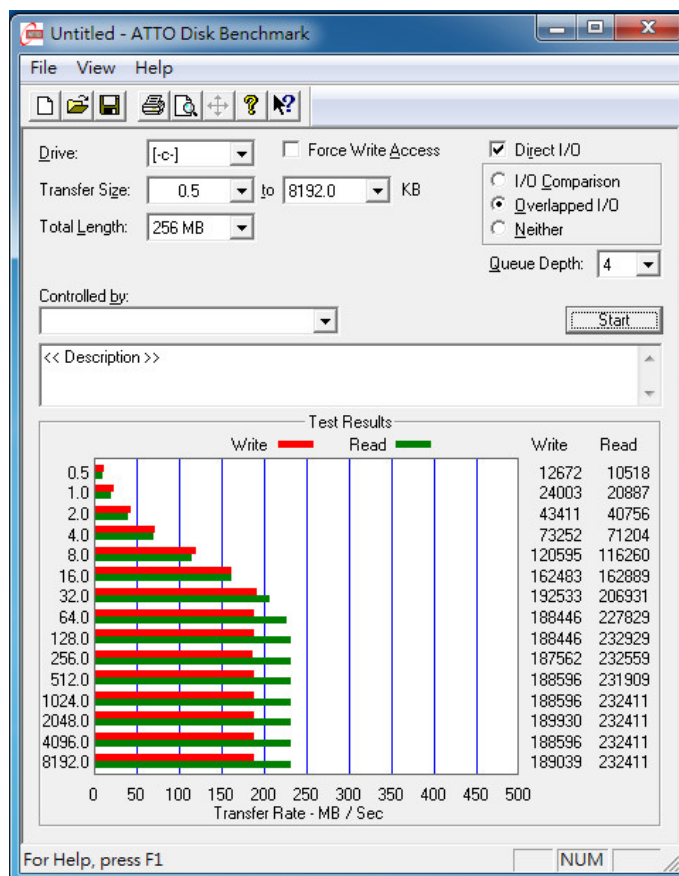
JBOD MODE Performance as below:



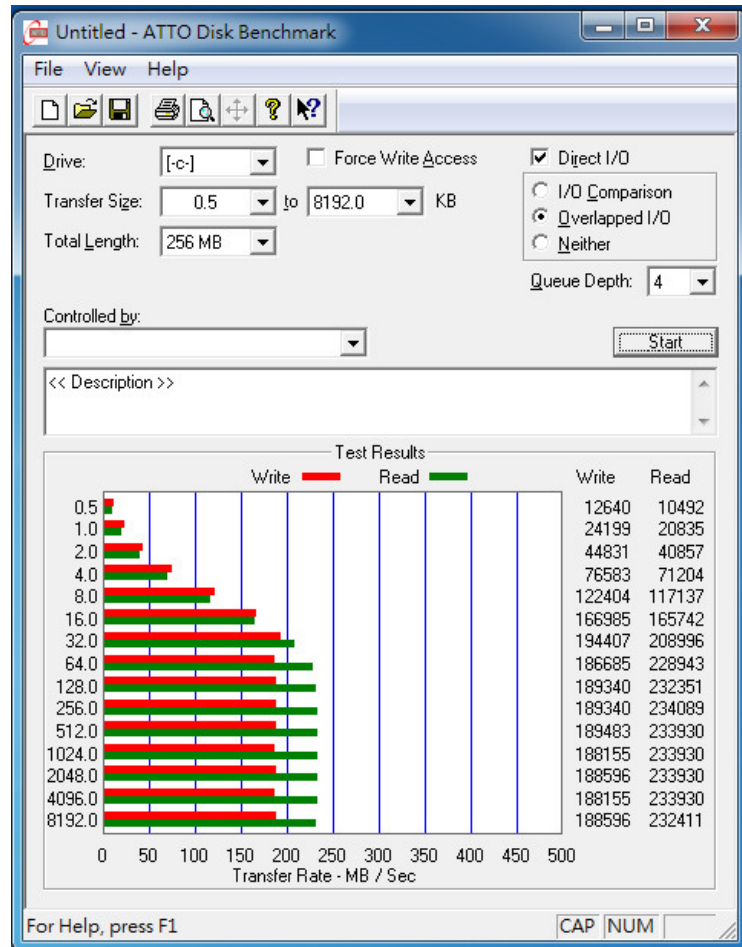
The following performance test use ATTO Disk BenchMark (partition and formatted by win 7 NTFS)
 RAID 0 MODE Performance as below:



RAID 1 MODE Performance as below:

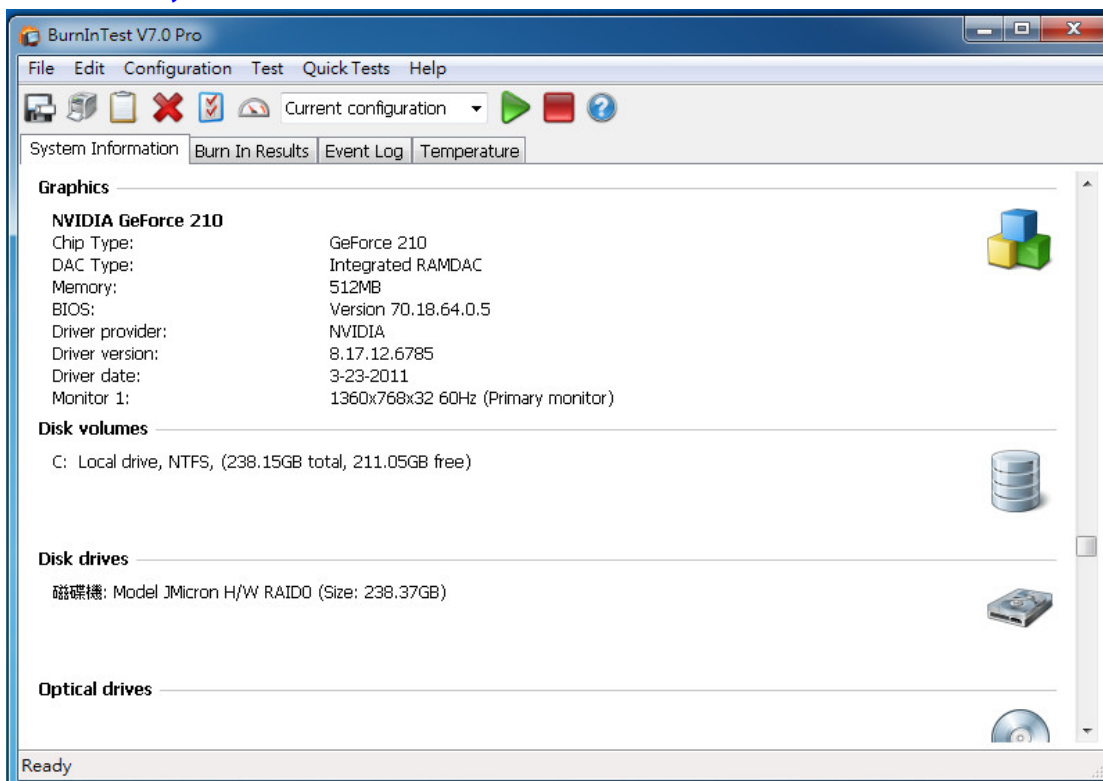


JBOD MODE Performance as below:

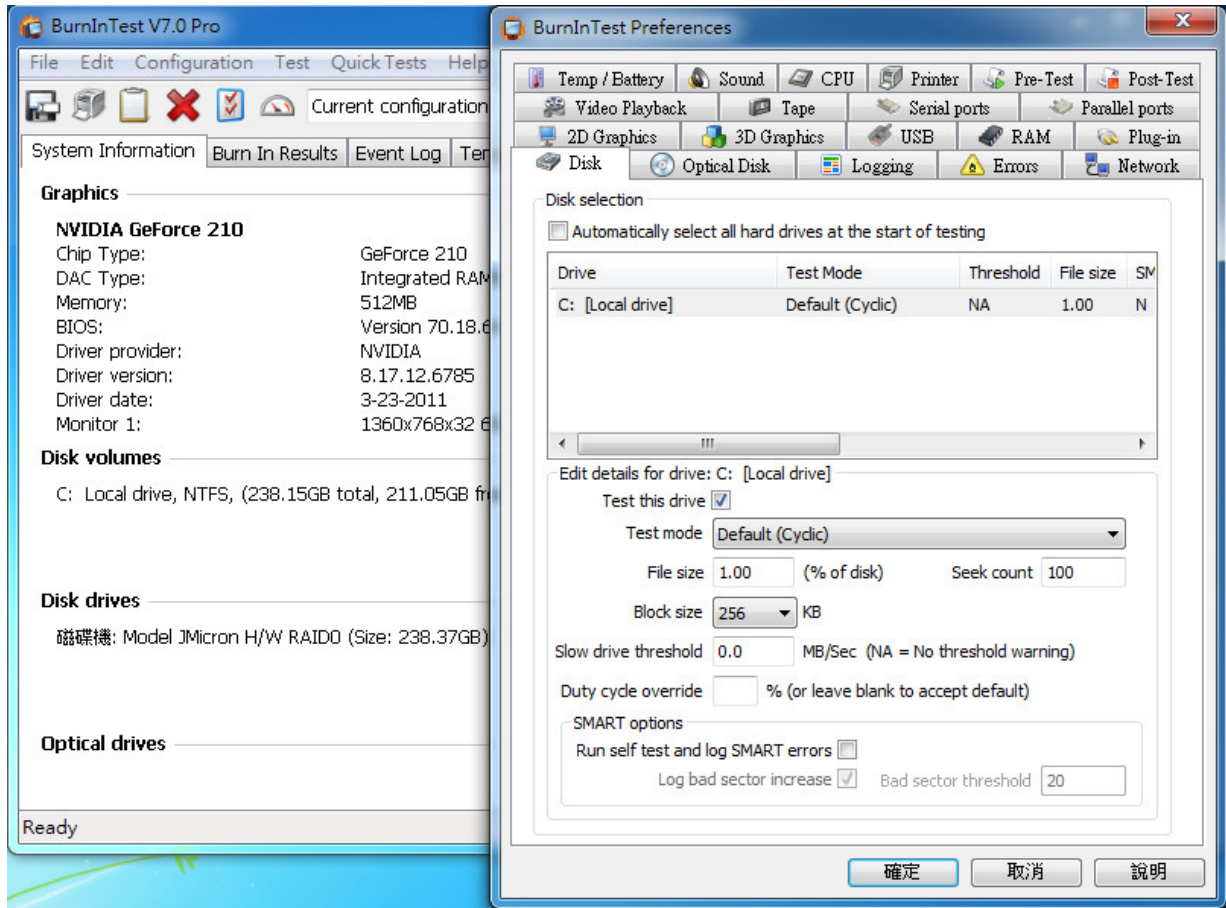


The following Burn in test use BurnInTest v7.0 Pro (partition and formatted by win 7 NTFS)

※ show RAID 0 MODE System information as below:



※ show Disk test mode(default cyclic -- 10 ways cycle test)



※ show R2021B or R2021D with MZMPA128HMFU-000 24-hour Burn-in test PASSED

